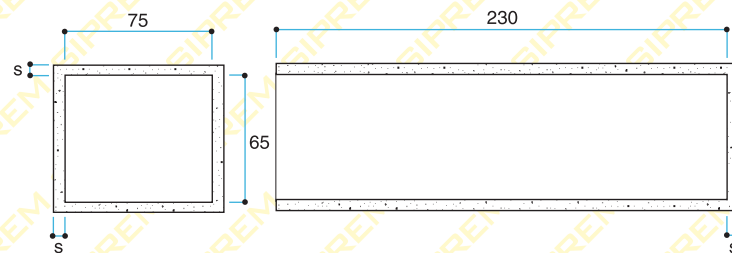
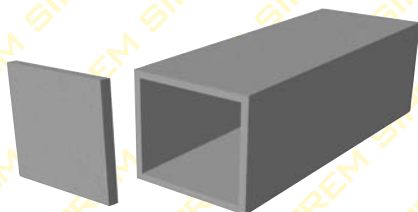
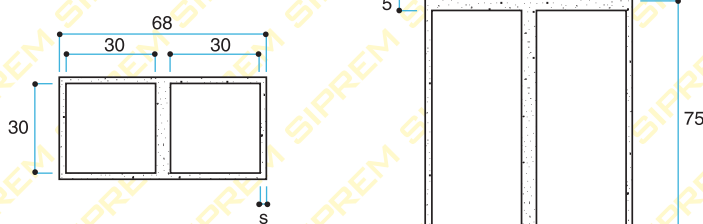
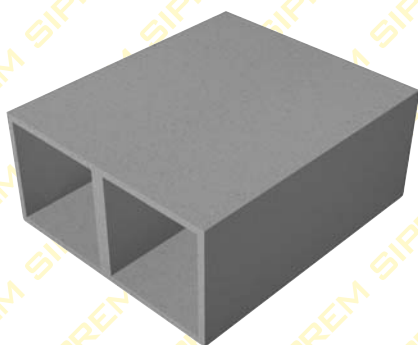
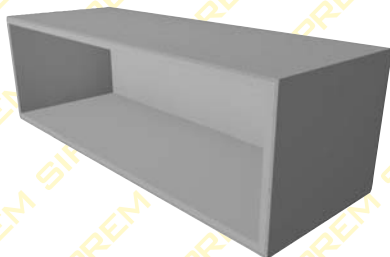


CIMITERIALI

LOCULI CIMITERIALI



CODICE	DESCRIZIONE	Larghezza cm	Altezza cm	Profondità cm	s cm	Peso kg
GLO7565FR	Loculo frontale	75	65	230	5	973
GLO7565LC	Lastra per loculo frontale	77	67	-	2,5	26
GLO2265LA	Loculo laterale	225	65	80	5	860
GOS3030DP	Ossario frontale doppio	30	30	75	2	133
GOS3030LC	Lastra per ossario frontale	30	30	-	2	4